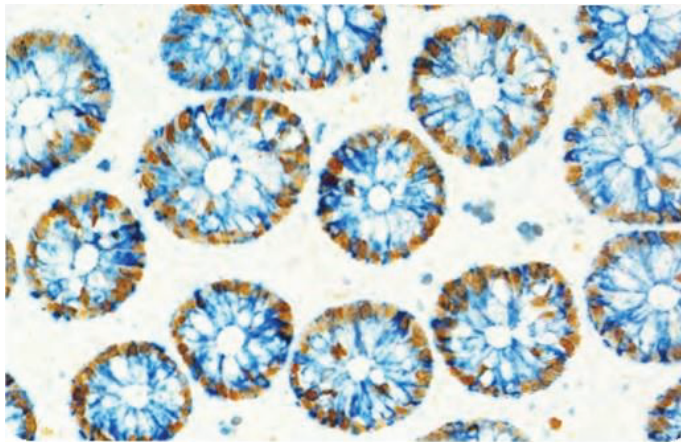
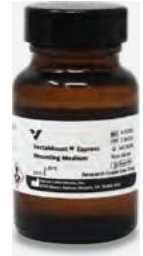


VectaMount® Express

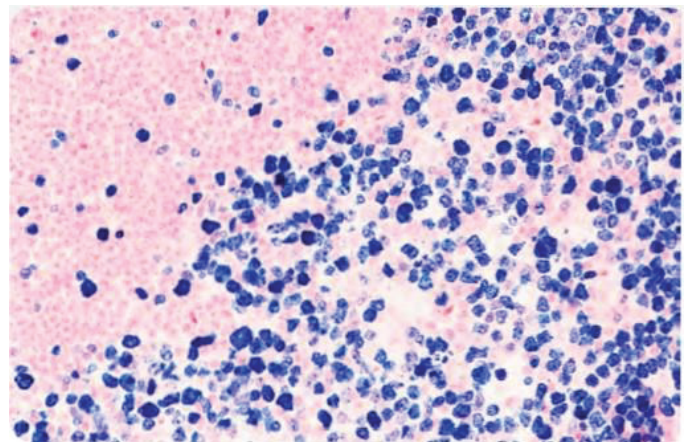
Mounting Medium

Introducing VectaMount Express Mounting Medium

VectaMount Express is a non-aqueous clearing and mounting medium enabling the rapid mounting of cell and tissue specimens following immunohistochemistry (IHC) staining. This novel formulation is engineered to enable mounting directly following staining, saving time by eliminating the need for extensive ethanol and clearing washes prior to coverslipping. Just stain your slides as per your usual workflow, briefly wash in isopropyl alcohol, and coverslip.



Human Colon, double label: Mouse Anti-Ki67: ImmPRESS®-HRP Anti-Mouse IgG, ImmPACT® DAB EqV and Rabbit Anti-Cytokeratin ImmPRESS-AP Anti-Rabbit IgG, Vector® Blue. Mounted in VectaMount Express Mounting Media.



Human Tonsil: Mouse Anti-Ki67, ImmPRESS-AP Anti-Mouse IgG, Vector Blue, Nuclear Fast Red counterstain. Mounted in VectaMount Express Mounting Media.

Faster IHC clearing and mounting

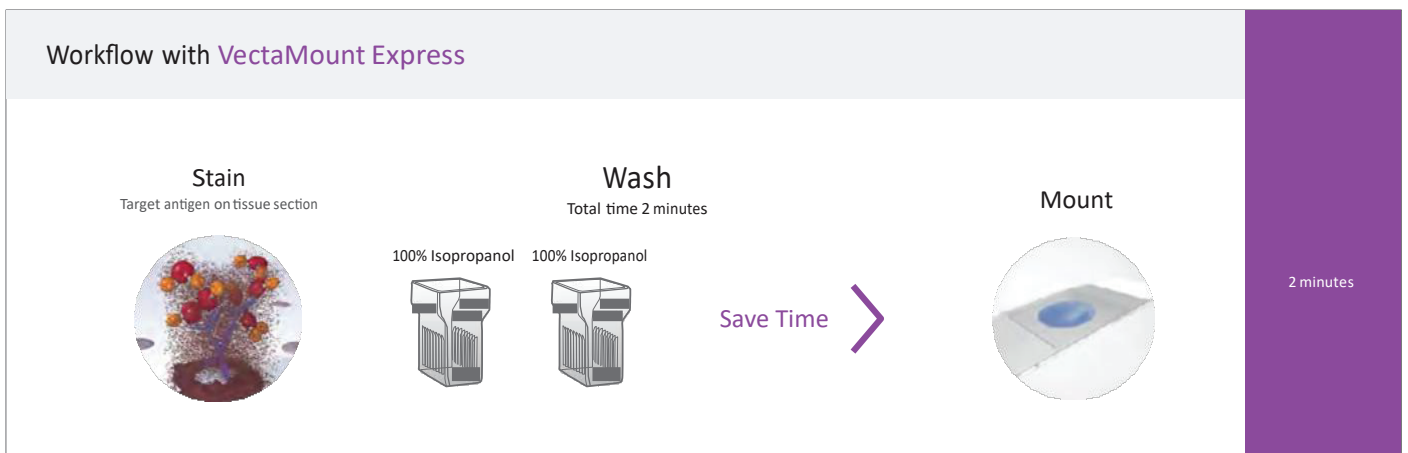
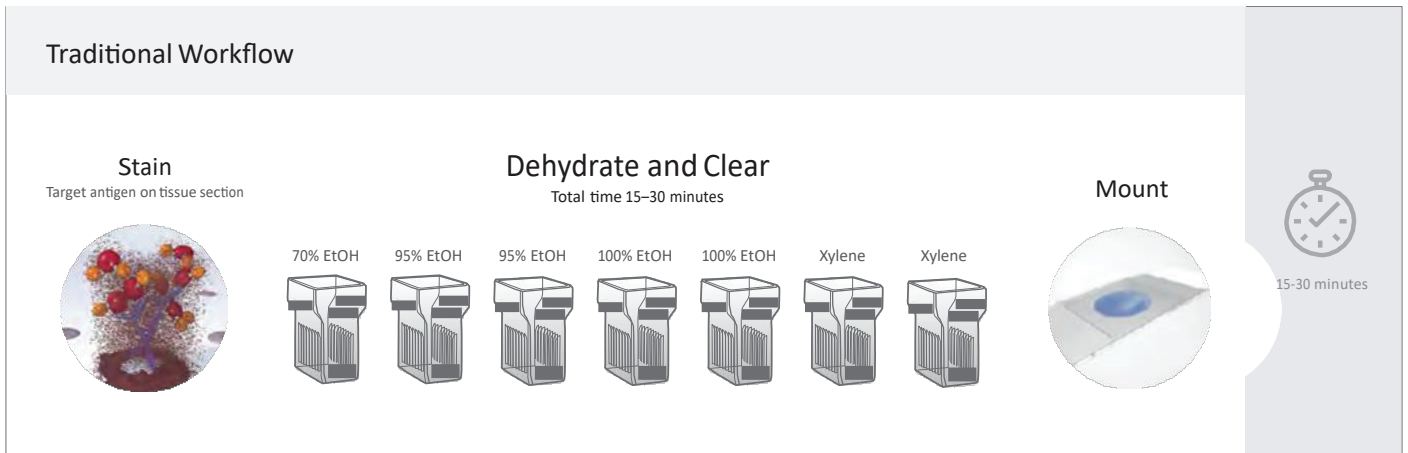
- ✓ Eliminates the need for extensive ethanol washes and solvent-based clearing agents (e.g., xylene)
- ✓ Rapid drying formula for fast visualization of stained samples
- ✓ Preserves staining for at least 18 months at room temperature
- ✓ Compatible with horseradish peroxidase (HRP) and alkaline phosphatase (AP) enzyme substrates
- ✓ Refractive index of 1.49

Product	Unit size	cat. No.	Format
VectaMount® Express Mounting Medium	60ml	H-5700	Non-Aqueous

VectaMount Express Mounting Medium

Streamline your IHC workflow

Streamline your IHC workflow with faster clearing and mounting



Why VectaMount Express?



Save Time

Stop wasting your valuable time with up to 30 minutes of tedious slide handling through an ethanol dehydration series and xylene clearing prior to coverslipping. Just stain, wash, and mount.



Enjoy Convenience

With a mounting workflow that's ready and available when you are, staining is more accessible. Streamline your IHC workflow and get right to your imaging.



Save Money

Minimize the need for alcohols and xylenes — and the associated disposal costs — in your IHC workflow.



Apply with Ease

With an optimal viscosity, this mounting medium enables easy application and uniform spreading.



Embrace Sustainability

Reduce laboratory waste by decreasing your dependence on alcohols and xylene for histological-based assays.