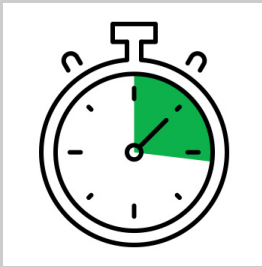


Simplify the Preparation of Transfection-Grade Plasmid DNA

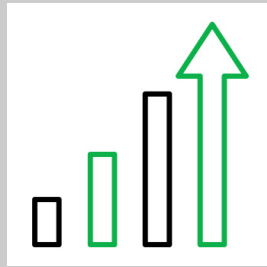
ZymoPURE Endotoxin-Free Plasmid Purification Kits



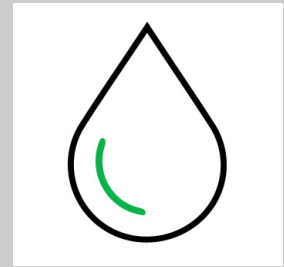
Ultra-Fast Midi & Maxipreps



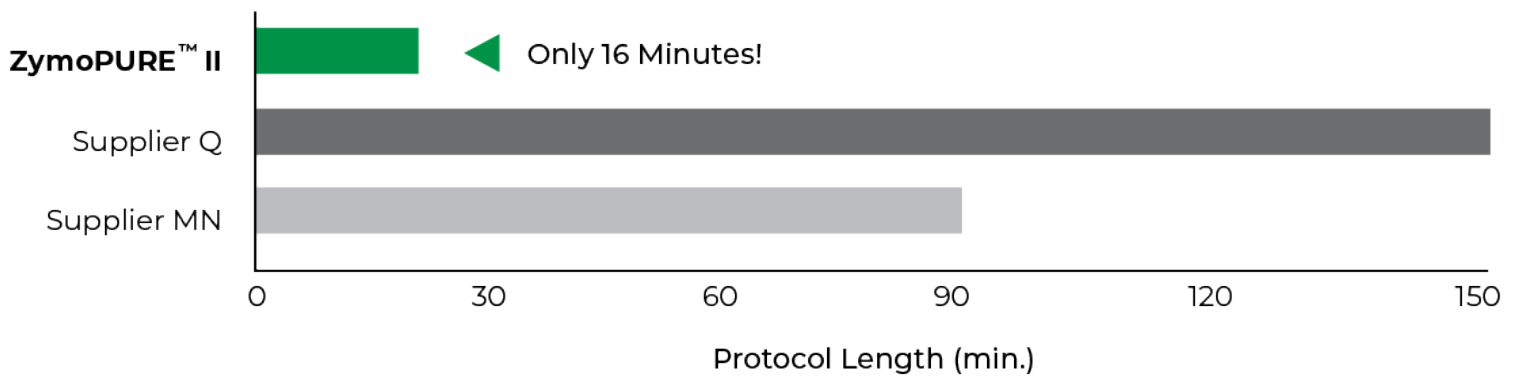
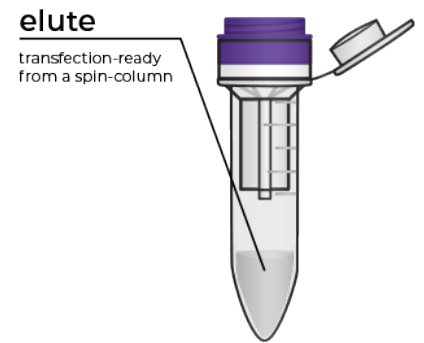
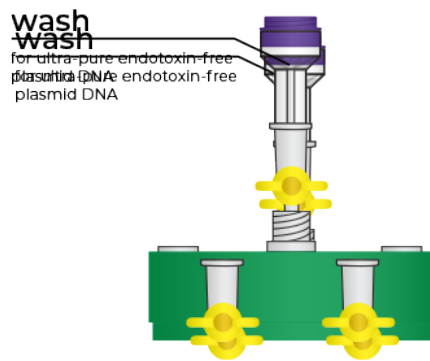
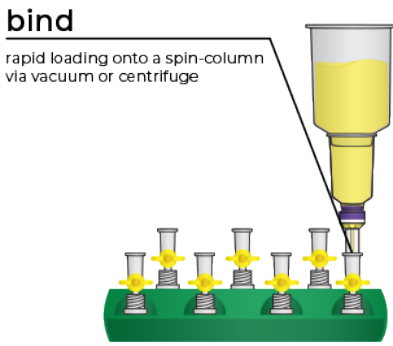
Fastest
Simple 16-minute
Midi/Maxi preps



Highest Yield
Up to 25 mg
from a spin-column



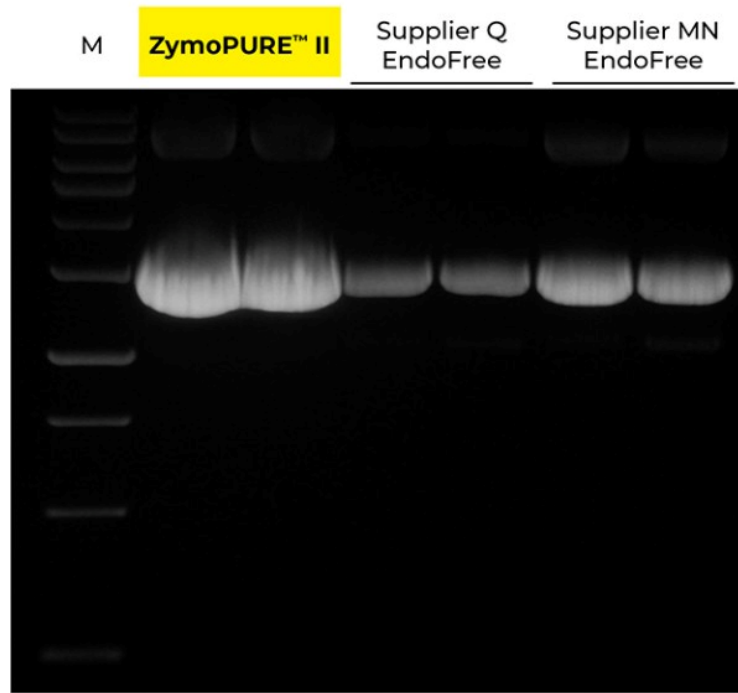
Ultra-Pure
Endotoxin-Free &
Transfection Ready



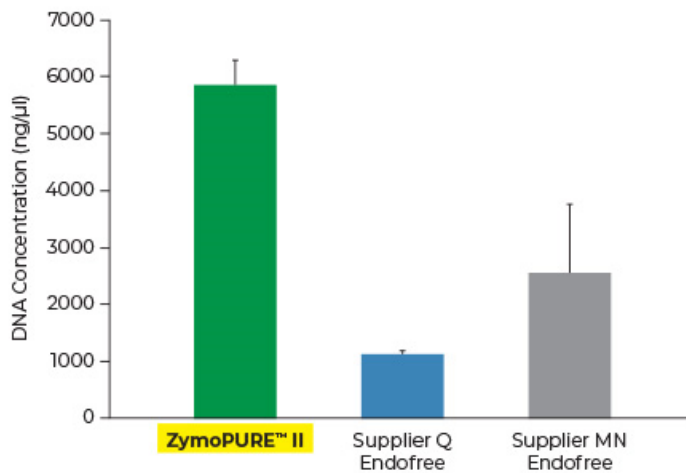
Simply bind, wash, and elute.

Simply bind, wash and elute. Novel binding chemistry and spin-column enables simple purification of transfection-ready plasmid DNA up to 9x faster using a vacuum manifold or centrifuge. No slow gravity flow columns, no tedious alcohol precipitation.

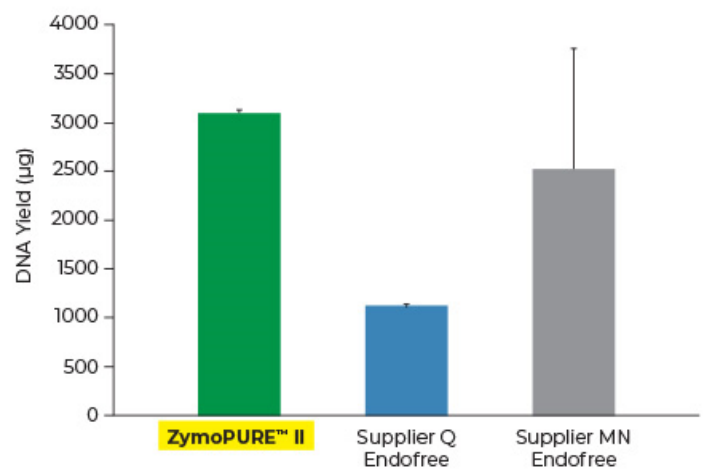
Highest Yield. Lowest Elution Volume.



Up to 6x More Concentrated Plasmid

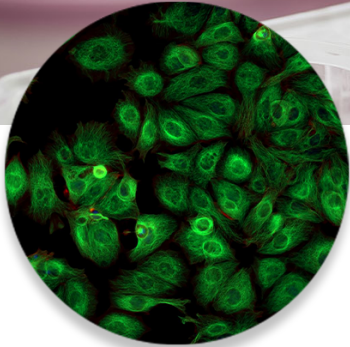


Up to 3x More Plasmid DNA Yield



Yield and concentration for plasmid DNA isolated using the ZymoPURE II Maxiprep kit compared to two endotoxin-free plasmid purification kits from Supplier Q and Supplier MN. Plasmid DNA (pGL3®) was isolated from 150 ml of JM109 E. coli culture grown overnight following the manufacturer's suggested protocol (in duplicate). One (1) μl of eluted plasmid DNA was visualized post agarose gel electrophoresis. M, ZR 1 kb DNA Marker (Zymo Research).

Transfection Ready Plasmid DNA



Endotoxin-Free

Purify Endotoxin-Free Plasmid with ZymoPURE II Midi, Maxi & Gigaprep Kits



Application-ready

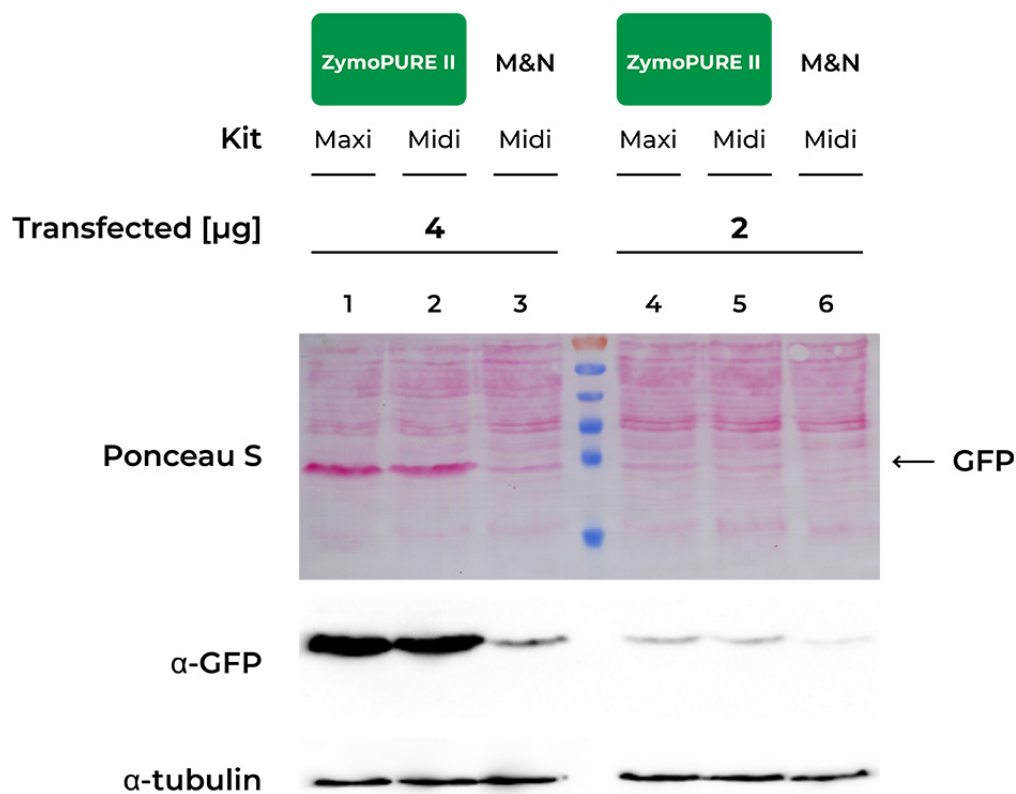
CRISPR, gene modification, lentiviral vectors, synthetic biology, etc.



Ultra-Pure

For sensitive primary cells, *in vivo* injections, cloning, etc.

Superior Transfection Efficiency



HeLa Cells seeded in a 6-well plate were transfected with either 2 or 4 μ g of pCI-neo[®]+GFP plasmid isolated from 100 ml of bacteria culture using the ZymoPURE Midiprep Kit, ZymoPURE Maxiprep Kit, or MN Midiprep Kit. GFP expression was assessed 48 hours later in cell lysates using western blot and Ponceau S staining. The blot was also probed with an antibody against alpha-Tubulin in order to verify equal loading samples. Data generated by V.B. at University of Cologne