

## Key Inflammasome Research Tools

### KO-Validated Standard Antibodies

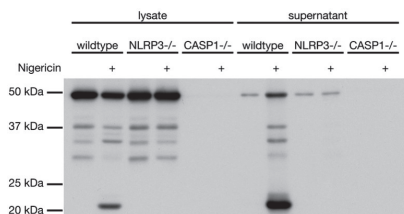
#### Detection of Activated p10 & p20 Caspase-1 by Western Blot (WB)

##### anti-Caspase-1 (p20) (mouse), mAb (Casper-1)

WB, IHC, IP

AG-20B-0042

**FIGURE:** Mouse caspase-1 (p20) is detected by immunoblotting using anti-Caspase-1 (p20) (mouse), mAb (Casper-1) (Prod. No. AG-20B-0042) in cell extracts and supernatants of differentiated bone marrow-derived dendritic cells (BMDCs) from wild-type, NLRP3<sup>-/-</sup> and caspase-1<sup>-/-</sup> mice.

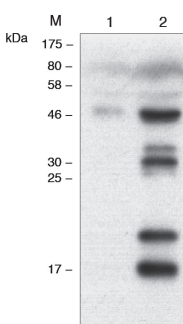


##### anti-Caspase-1 (p20) (human), mAb (Bally-1)

WB

AG-20B-0048

**FIGURE:** Human caspase-1 (p20) is detected by immunoblotting using anti-Caspase-1 (p20) (human), mAb (Bally-1) (Prod. No. AG-20B-0048) in supernatants of THP1 cells differentiated for 3 h with 0.5  $\mu$ M PMA (Prod. No. AG-CN2-0010) and activated (lane 2) or not (lane 1) by 5  $\mu$ M Nigericin for 1 h (Prod. No. AG-CN2-0020).

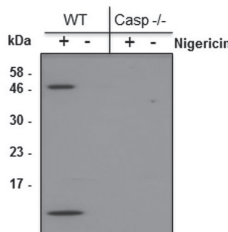


##### anti-Caspase-1 (p10) (mouse), mAb (Casper-2)

WB

AG-20B-0044

**FIGURE:** Mouse caspase-1 (p10) is detected by immunoblotting using anti-Caspase-1 (p10) (mouse), mAb (Casper-2) (Prod. No. AG-20B-0044) in supernatants of differentiated bone marrow-derived dendritic cells (BMDCs) from wild-type and caspase-1<sup>-/-</sup> mice activated or not by 5  $\mu$ M nigericin (Prod. No. AG-CN2-0020) for 30 min.

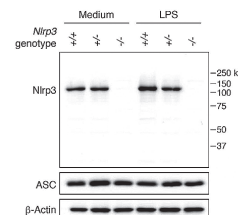


#### MOST TRUSTED NLRP3 Antibody

##### anti-NLRP3/NALP3, mAb (Cryo-2)

ICC, IHC, IP, WB

AG-20B-0014



**FIGURE:** Mouse NLRP3 is detected in mouse macrophages (BMDMs) WT <sup>+/+</sup> (lane 1), NLRP3<sup>+/-</sup> (lane 2) or NLRP3<sup>-/-</sup> (lane 3), with or without treatment with LPS (50 ng/ml) for 3 h, using the monoclonal antibody to NLRP3 (Cryo-2) (Prod. No. AG-20B-0014).

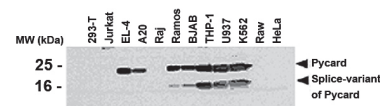
Over 1000 citations!

#### AL177 – Asc for the Best!

##### anti-Asc, pAb (AL177)

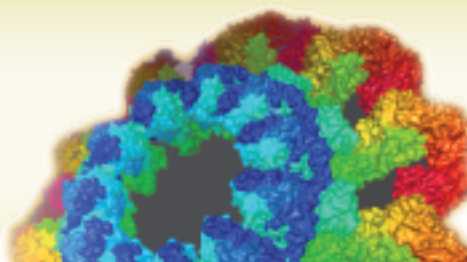
FACS, ICC, IHC, IP, WB, FUNC

AG-25B-0006



**FIGURE:** Western blot analysis of various human (293-T, Jurkat, Raj, Ramos, BJAB, THP-1, U937, K562, Raw, HeLa) and mouse (EL-4, A20) cell lines using anti-Asc, pAb (AL177) (Prod. No. AG-25B-0006).

The antibody AL177 can be used to measure inflammasome activation *in vivo*, detecting Asc speck formation by immunofluorescence and by Flow Cytometry.



## KO-Validated Standard Antibodies

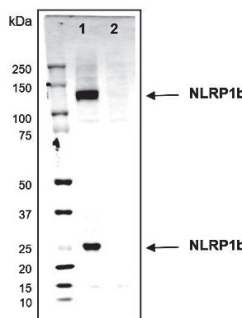
### NLRP1 – A New Inflammasome Player

#### anti-NLRP1b (mouse), mAb (2A12)

AG-20B-0084

WB

**FIGURE:** Mouse NLRP1b (mouse) (full-length and UFA-CARD fragment) is detected in cell extracts (about 30 µg) from the mouse cells Raw264.7 (lane 1) or Raw264.7 NLRP1b KO (lane 2) using NLRP1b, mAb (2A12) (Prod. No. AG-20B-0084).



### ZBP1 – Regulator of NLRP3 and Interferon

#### anti-ZBP1, mAb (Zippy-1)

ICC, IP, WB

AG-20B-0010

The dsRNA-binding protein ZBP1 is a key factor in interferon biology involved in viral infection and inflammation regulation. It activates the NLRP3 inflammasome, the IFN pathway and different programmed cell deaths regulated by the PANoptosome complexes. Recently, studies show that the RNA-editing enzyme ADAR1 prevents ZBP1 activation.

## Other Standard Antibodies for Inflammasome and PANoptosis Research

anti-AIM2 (human), mAb (3B10)	ICC, WB	AG-20B-0040
anti-Caspase-4/11 (p20), mAb (Flamy-1)	IP, WB	AG-20B-0060
anti-Caspase-8 (human), mAb (C15)	ICC, IP, WB	AG-20B-0057
anti-Caspase-8 (mouse), mAb (1G12)	ELISA, FACS, ICC, WB	AG-20T-0137
anti-Caspase-8 (mouse), mAb (3B10)	ELISA, FACS, ICC, IHC, WB	AG-20T-0138
anti-IL-1 $\alpha$ (p18) (mouse), mAb (Teo-1)	ELISA, WB	AG-20B-0064
anti-RIG-I, mAb (Alme-1)	IHC, IP, WB	AG-20B-0009

**NEW**

### NLRP3 Inflammasome Starter Sets Key Antibodies for Western Blotting

NLRP3 Inflammasome Human Antibodies Starter Set	AG-44B-0008
NLRP3 Inflammasome Mouse Antibodies Starter Set	AG-44B-0009

## Small Molecule NLRP3 Inflammasome Activators & Inhibitors

#### Activators

##### Monosodium urate (Activity tested)

- Crystals AG-CR1-3950  
- Ready-to-Use AG-CR1-3951

**N-Acetyl-D-glucosamine** AG-CN2-0489

**Nigericin . Na** AG-CN2-0020

#### Inhibitors

**BAY 11-7082** AG-CR1-0013 **K777** AG-CR1-0158

**Dapansutril** AG-CR1-3535 **MCC950 . Na** AG-CR1-3615

**Glyburide (USP)** AG-CR1-3613 **Parthenolide** AG-CN2-0455

**Isoliquiritigenin** AG-CN2-0459 **Prostaglandin E2** AG-CL1-0001