

**Cell selection & expansion**

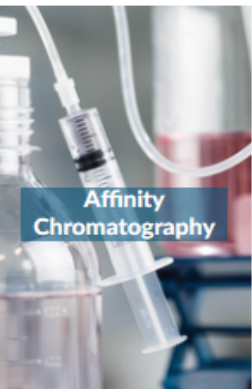
- Cell isolation & staining
- Antigen-specific T cell isolation & staining
- T cell stimulation & expansion

**Exosome isolation**

[www.iba-lifesciences.com](http://www.iba-lifesciences.com)

**Protein production & assays**

- Cloning & expression
- Protein detection
- Protein immobilization
- Protein purification



**Affinity Chromatography**



**Antibody Purification**



**Antigen-specific Cell Isolation**



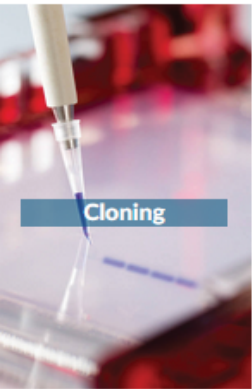
**Biotin Blocking**



**Cell Isolation**



**Cell Stimulation & Expansion**



**Cloning**



**ELISA**



**Exosome Isolation**



**Flow Cytometry**



**High-Throughput Purification**



**Protein Purification**



**Protein-Protein Interaction**



**Pull-Down**



**SPR & BLI**



**Staining & Detection**



**Transfection**



**Western Blot**