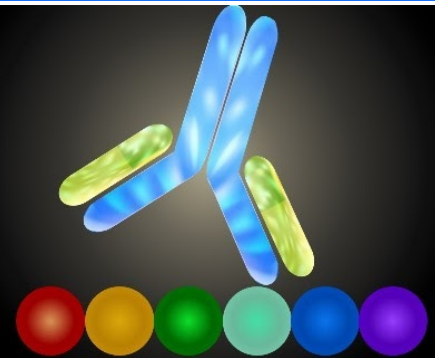


EPITOPE MAPPING

Peptide-based arrays for high throughput screening



Epitope Mapping: Products & Services

RayBiotech offers **peptide-based arrays** for epitope mapping to identify the specific binding sites of an antibody or serum sample. Our arrays use overlapping, chemically-synthesized peptides spanning the length of the protein-of-interest.

Advantages of using RayBiotech's peptide-based arrays:

- Complete protein coverage
- Simple to use with results in <1 day
- Easy data interpretation
- Small serum sample volumes required (2 µl)
- High sensitivity and large dynamic range
- Suitable for high-throughput assays
- High efficiency and accuracy for linear epitopes

Peptide Array-Based Epitope Mapping Service

Applications

- Identify high antigenicity epitopes for antibody production & vaccine development
- Locate (auto)antigen epitopes of (auto) antibodies
- Define the best antibody clone against the protein-of-interest
- Perform epitope mutant analysis
- Map B cell epitopes

Service Features

- Small serum sample volume required (2 µl)
- High density (simultaneously analyze hundreds of overlapping peptides)
- High sensitivity
- Large dynamic range
- Suitable for high-throughput assays
- High efficiency and accuracy
- Affordable, quick and simple to use

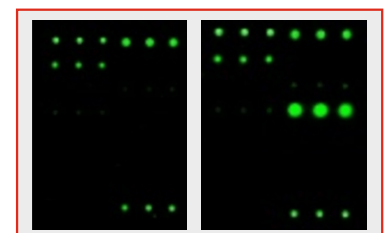
Available Pre-made Epitope Mapping Arrays

Cytotoxic T-Lymphocyte Associated Protein 4 (CTLA4)

Lymphocyte Activating 3 (LAG3)

Programmed Cell Death (PD-1)

Programmed Death Ligand1 (PD-L1)



Detection of antibody binding to a RayBiotech peptide-based epitope mapping array. Array was incubated with A) buffer or B) monoclonal antibody.